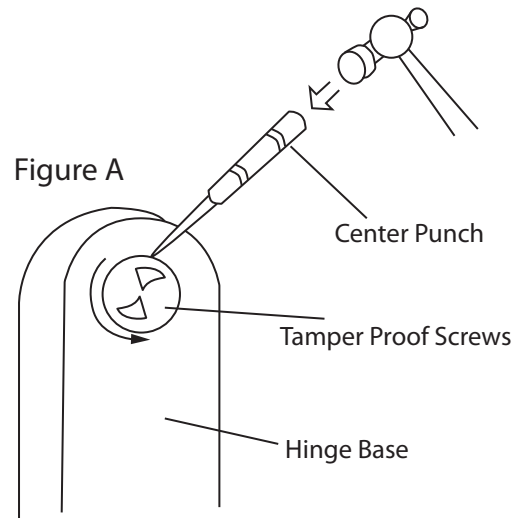


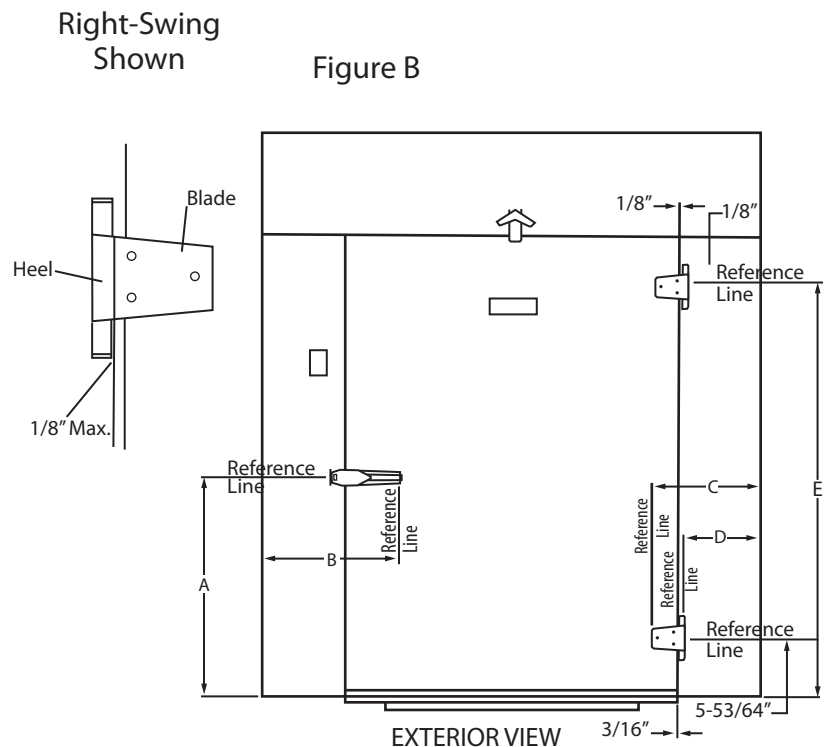
1. Disconnect the 120V outside power source to the door frame light junction box.
2. Disconnect crossover cord from the light junction box on the door frame. Remove the screws from the base of each hinge mounted to the door frame. Disengage the door latch and remove the door. (Figure A)

3. Shim new door into place making sure the fit is both level and plumb.  
\*NOTE: Be aware of the clearance between the doorcap and the frame, this distance should remain as even as possible around perimeter of door. (Approximately 1/8")

4. Locate horizontal center line of each hinge by using appropriate measurements for applicable door size. (see Figure B) Position hinge on door so that the heel of the hinge is approximately 1/8" away from the edge of the frame.

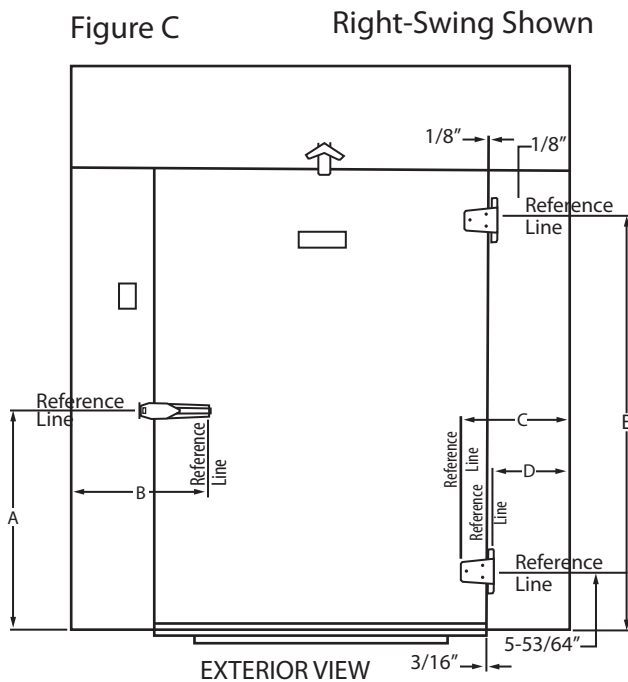


DOOR PANEL	PANEL WIDTH	DIMENSIONS				
		A	B	C	D	E
24" x 78"	46"	40-5/64"	21-1/2"	13-3/8"	9-1/2"	73-29/64"
24" x 78"	69"	40-5/64"	33"	24-7/8"	21"	73-29/64"
24" x 78"	57-1/2"	40-5/64"	27-1/4"	19-1/8"	15-1/4"	73-29/64"
30" x 66"	46"	34-5/64"	18-1/2"	10-3/8"	6-1/2"	61-29/64"
30" x 66"	69"	34-5/64"	30"	21-7/8"	18"	61-29/64"
30" x 66"	57-1/2"	34-5/64"	24-1/4"	16-1/8"	12-1/4"	61-29/64"
30" x 78"	46"	40-5/64"	18-1/2"	10-3/8"	6-1/2"	73-29/64"
30" x 78"	69"	40-5/64"	30"	21-7/8"	18"	73-29/64"
30" x 78"	57-1/2"	40-5/64"	24-1/4"	16-1/8"	12-1/4"	73-29/64"
30" x 84"	46"	43-5/64"	18-1/2"	10-3/8"	6-1/2"	79-29/64"
30" x 84"	69"	43-5/64"	30"	21-7/8"	18"	79-29/64"
30" x 84"	57-1/2"	43-5/64"	24-1/4"	16-1/8"	12-1/4"	79-29/64"
34" x 66"	46"	34-5/64"	16-1/2"	8-3/8"	4-1/2"	61-29/64"
34" x 66"	69"	34-5/64"	28"	19-7/8"	16"	61-29/64"
34" x 66"	57-1/2"	34-5/64"	22-1/4"	14-1/8"	10-1/4"	61-29/64"
34" x 78"	46"	40-5/64"	16-1/2"	8-3/8"	4-1/2"	73-29/64"
34" x 78"	69"	40-5/64"	28"	19-7/8"	16"	73-29/64"
34" x 78"	57-1/2"	40-5/64"	22-1/4"	14-1/8"	10-1/4"	73-29/64"
34" x 84"	46"	43-5/64"	16-1/2"	8-3/8"	4-1/2"	79-29/64"
34" x 84"	69"	43-5/64"	28"	19-7/8"	16"	79-29/64"
34" x 84"	57-1/2"	43-5/64"	22-1/4"	14-1/8"	10-1/4"	79-29/64"
36" x 66"	46"	34-5/64"	15-1/2"	7-3/8"	3-1/2"	61-29/64"
36" x 66"	69"	34-5/64"	27"	18-7/8"	15"	61-29/64"
36" x 66"	57-1/2"	34-5/64"	21-1/4"	13-1/8"	9-1/4"	61-29/64"
36" x 78"	46"	40-5/64"	15-1/2"	7-3/8"	3-1/2"	73-29/64"
36" x 78"	69"	40-5/64"	27"	18-7/8"	15"	73-29/64"
36" x 78"	57-1/2"	40-5/64"	21-1/4"	13-1/8"	9-1/4"	73-29/64"
36" x 84"	46"	43-5/64"	15-1/2"	7-3/8"	3-1/2"	79-29/64"
36" x 84"	69"	43-5/64"	27"	18-7/8"	15"	79-29/64"
36" x 84"	57-1/2"	43-5/64"	21-1/4"	13-1/8"	9-1/4"	79-29/64"
42" x 78"	46"	40-5/64"	24"	15-7/8"	12"	73-29/64"
42" x 84"	69"	43-5/64"	24"	15-7/8"	12"	79-29/64"
42" x 78"	57-1/2"	40-5/64"	18-1/4"	10-1/8"	6-1/4"	73-29/64"
42" x 84"	57-1/2"	43-5/64"	18-1/4"	10-1/8"	6-1/4"	79-29/64"



5. Using a 13/64" drill bit and 1/4-20 tap, drill and tap holes for the hinge using the hinge as a pattern. Mount hinges using the stainless steel oval head hinge screws provided.

- Locate the latch base on the door. Position the latch base horizontally according to measurements taken from the outside edge of the door frame panel as shown on *Figure C*.
- Using latch base as a pattern, drill all screw holes with a 13/64" drill bit and 1/4"-20 tap. Mount the latch base on the door using the stainless steel oval head screws provided.



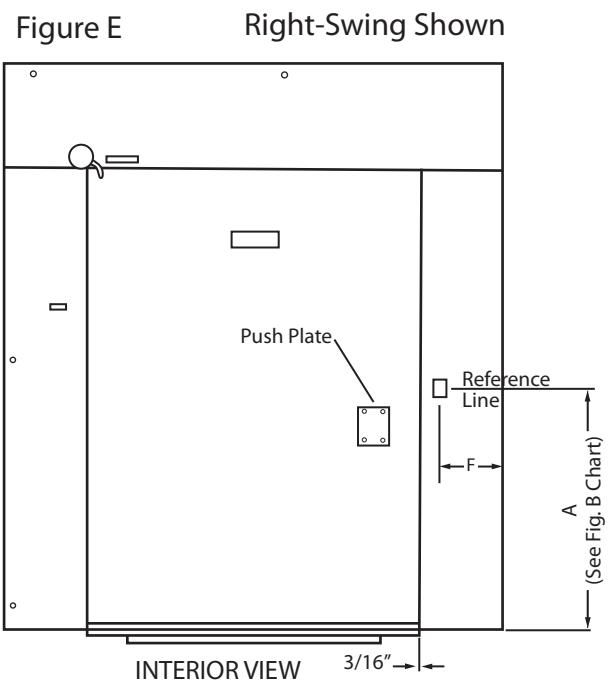
DOOR PANEL	PANEL WIDTH	DIMENSIONS				
		A	B	C	D	E
24" x 78"	46"	40-5/64"	21-1/2"	13-3/8"	9-1/2"	73-29/64"
24" x 78"	69"	40-5/64"	33"	24-7/8"	21"	73-29/64"
24" x 78"	57-1/2"	40-5/64"	27-1/4"	19-1/8"	15-1/4"	73-29/64"
30" x 66"	46"	34-5/64"	18-1/2"	10-3/8"	6-1/2"	61-29/64"
30" x 66"	69"	34-5/64"	30"	21-7/8"	18"	61-29/64"
30" x 66"	57-1/2"	34-5/64"	24-1/4"	16-1/8"	12-1/4"	61-29/64"
30" x 78"	46"	40-5/64"	18-1/2"	10-3/8"	6-1/2"	73-29/64"
30" x 78"	69"	40-5/64"	30"	21-7/8"	18"	73-29/64"
30" x 78"	57-1/2"	40-5/64"	24-1/4"	16-1/8"	12-1/4"	73-29/64"
30" x 84"	46"	43-5/64"	18-1/2"	10-3/8"	6-1/2"	79-29/64"
30" x 84"	69"	43-5/64"	30"	21-7/8"	18"	79-29/64"
30" x 84"	57-1/2"	43-5/64"	24-1/4"	16-1/8"	12-1/4"	79-29/64"
34" x 66"	46"	34-5/64"	16-1/2"	8-3/8"	4-1/2"	61-29/64"
34" x 66"	69"	34-5/64"	28"	19-7/8"	16"	61-29/64"
34" x 66"	57-1/2"	34-5/64"	22-1/4"	14-1/8"	10-1/4"	61-29/64"
34" x 78"	46"	40-5/64"	16-1/2"	8-3/8"	4-1/2"	73-29/64"
34" x 78"	69"	40-5/64"	28"	19-7/8"	16"	73-29/64"
34" x 78"	57-1/2"	40-5/64"	22-1/4"	14-1/8"	10-1/4"	73-29/64"
34" x 84"	46"	43-5/64"	16-1/2"	8-3/8"	4-1/2"	79-29/64"
34" x 84"	69"	43-5/64"	28"	19-7/8"	16"	79-29/64"
34" x 84"	57-1/2"	43-5/64"	22-1/4"	14-1/8"	10-1/4"	79-29/64"
36" x 66"	46"	34-5/64"	15-1/2"	7-3/8"	3-1/2"	61-29/64"
36" x 66"	69"	34-5/64"	27"	18-7/8"	15"	61-29/64"
36" x 66"	57-1/2"	34-5/64"	21-1/4"	13-1/8"	9-1/4"	61-29/64"
36" x 78"	46"	40-5/64"	15-1/2"	7-3/8"	3-1/2"	73-29/64"
36" x 78"	69"	40-5/64"	27"	18-7/8"	15"	73-29/64"
36" x 78"	57-1/2"	40-5/64"	21-1/4"	13-1/8"	9-1/4"	73-29/64"
36" x 84"	46"	43-5/64"	15-1/2"	7-3/8"	3-1/2"	79-29/64"
36" x 84"	69"	43-5/64"	27"	18-7/8"	15"	79-29/64"
36" x 84"	57-1/2"	43-5/64"	21-1/4"	13-1/8"	9-1/4"	79-29/64"
42" x 78"	46"	40-5/64"	24"	15-7/8"	12"	73-29/64"
42" x 84"	69"	43-5/64"	24"	15-7/8"	12"	79-29/64"
42" x 78"	57-1/2"	40-5/64"	18-1/4"	10-1/8"	6-1/4"	73-29/64"
42" x 84"	57-1/2"	43-5/64"	18-1/4"	10-1/8"	6-1/4"	79-29/64"

- With needle nose pliers, carefully insert the handle spring clip from the back of the handle latch, into the base slot, and over the latch handle pin. This will secure the handle to the base.
- From the inside of the door frame, locate the reference line dimensions for placement of the inside release. (*Figure E*) If the hole for the inside release is not already present, drill a 1/2" hole through the frame at this time.

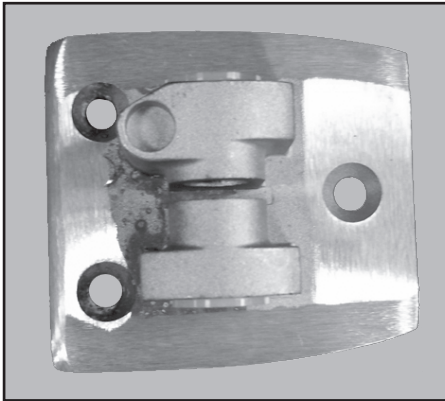
DOOR SIZE	PANEL WIDTH	Dimensions F	DOOR SIZE	PANEL WIDTH	Dimensions F
24" x 78"	46"	9-3/8"	34" x 78"	57-1/2"	10-1/8"
24" x 78"	69"	20-7/8"	34" x 84"	46"	4-3/8"
24" x 78"	57-1/2"	15-1/8"	34" x 84"	69"	15-7/8"
30" x 66"	46"	6-3/8"	34" x 84"	57-1/2"	10-1/8"
30" x 66"	69"	17-7/8"	36" x 66"	46"	3-3/8"
30" x 66"	57-1/2"	12-1/8"	36" x 66"	69"	14-7/8"
30" x 78"	46"	6-3/8"	36" x 66"	57-1/2"	9-1/8"
30" x 78"	69"	17-7/8"	36" x 78"	46"	3-3/8"
30" x 78"	57-1/2"	12-1/8"	36" x 78"	69"	14-7/8"
30" x 84"	46"	6-3/8"	36" x 78"	57-1/2"	9-1/8"
30" x 84"	69"	17-7/8"	36" x 84"	46"	3-3/8"
30" x 84"	57-1/2"	12-1/8"	36" x 84"	69"	14-7/8"
34" x 66"	46"	4-3/8"	36" x 84"	57-1/2"	9-1/8"
34" x 66"	69"	15-7/8"	42" x 78"	69"	11-7/8"
34" x 66"	57-1/2"	10-1/8"	42" x 84"	69"	11-7/8"
34" x 78"	46"	4-3/8"	42" x 78"	57-1/2"	6-1/8"
34" x 78"	69"	15-7/8"	42" x 84"	57-1/2"	6-1/8"

- From the outside of the door frame, mark off 1-1/8" horizontally from the center of the inside release hole. Drill a new 5/16" hole in the panel. This will be necessary for the strike plate locating tab.

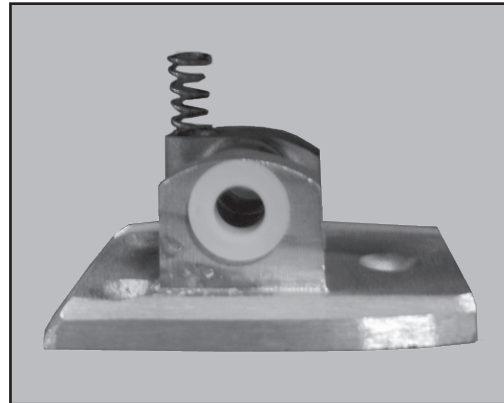
- Insert the inside release bolt into the strike plate and insert it into the panel hole.
- Locate the safety release handle parallel with the strike bolt cam and light against the interior walk-in wall. Drill out a 1/8" dia. hole in the inside release bolt and insert the roll pin as indicated in *Figure D*. The fit should be fairly tight in moving the handle upwards.



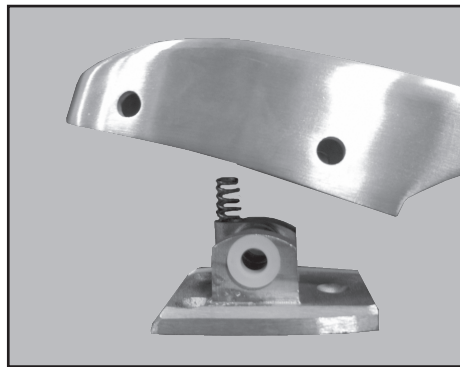
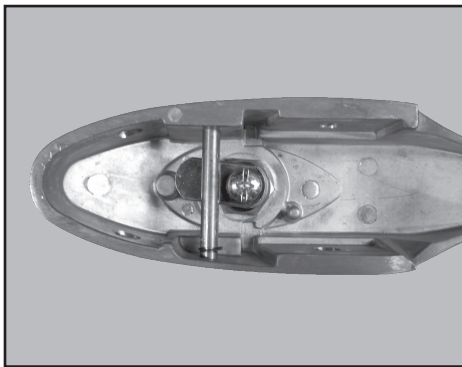
- Open and close the door several times to be sure all hardware is functioning properly.
- Re-connect cross-over cord and 120V incoming line.



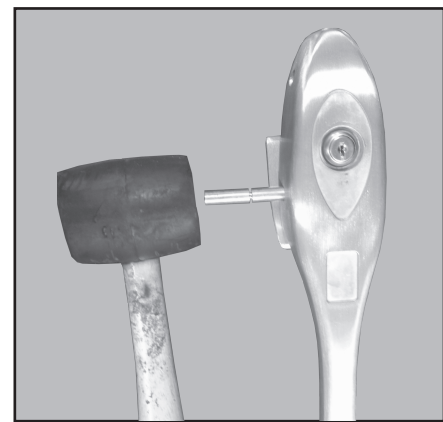
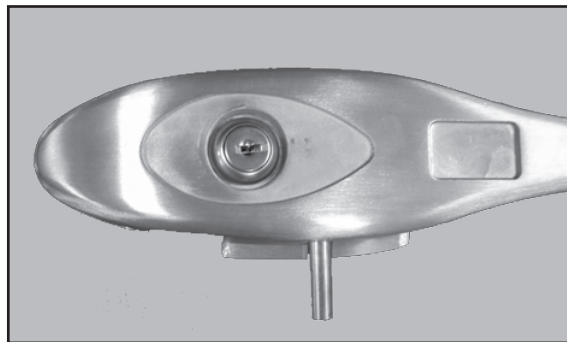
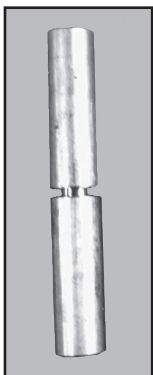
1. Mount base to door.



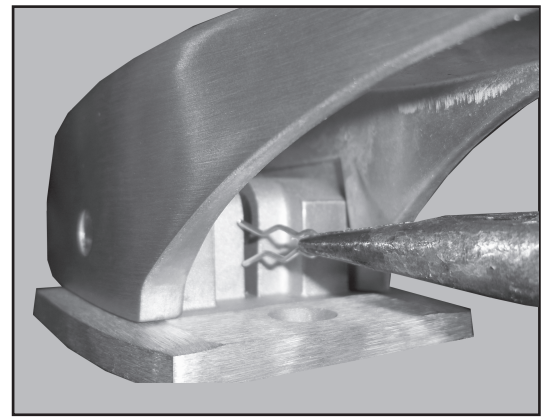
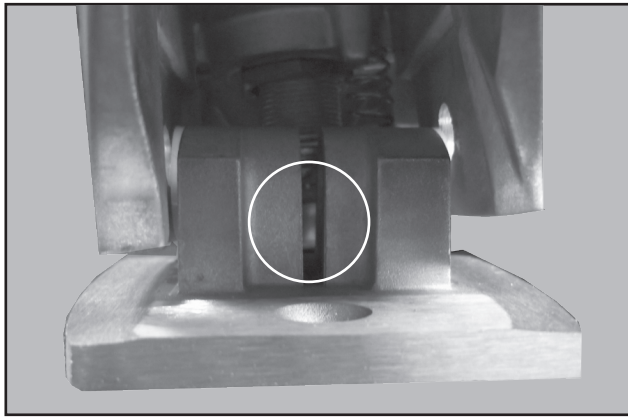
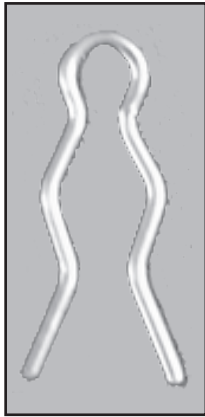
2. Set & push spring with slight pressure into spring pocket.



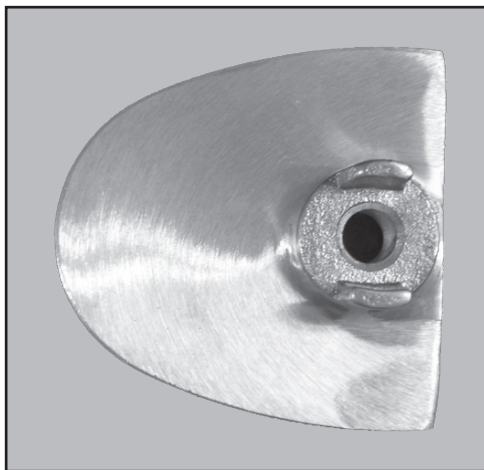
3. Place handle over base, lining up side holes of handle with side holes of base. Note: Handle will resist due to spring tension as it's forced down. Make sure opposite end of spring has engaged handle boss.



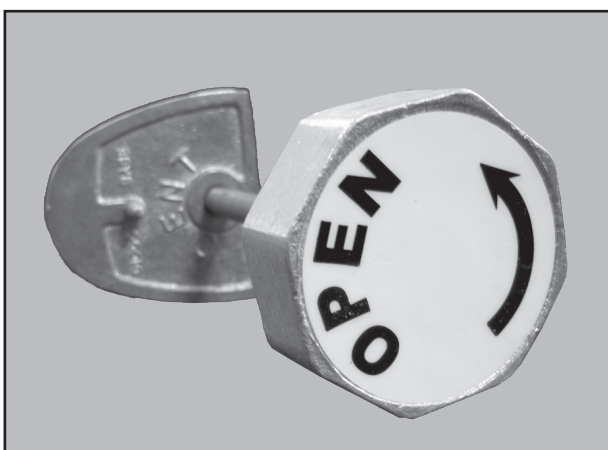
4. Holding handle down securely, insert handle pin through hole of handle & base. Push or use hammer to tap pin lightly through holes until groove of pin is lined up with center slot of base.



5. Insert clip through slot of base on to groove of pin using needle nose pliers.

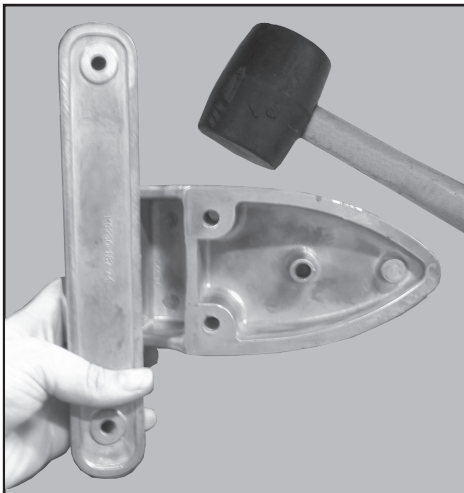
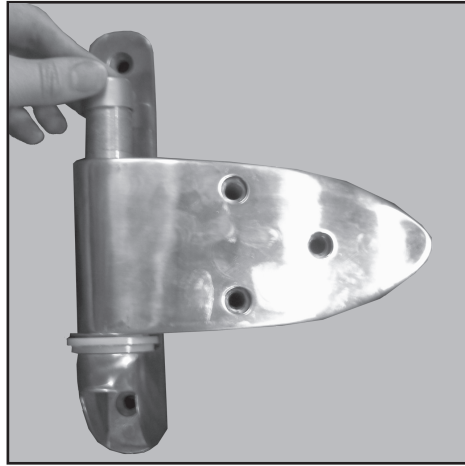


6. With door open, mount strike on jamb, lining up small boss with small hole. At same time, push inside release rod through back of inside jamb hole, through the wall until it engages threaded hole in back of strike.



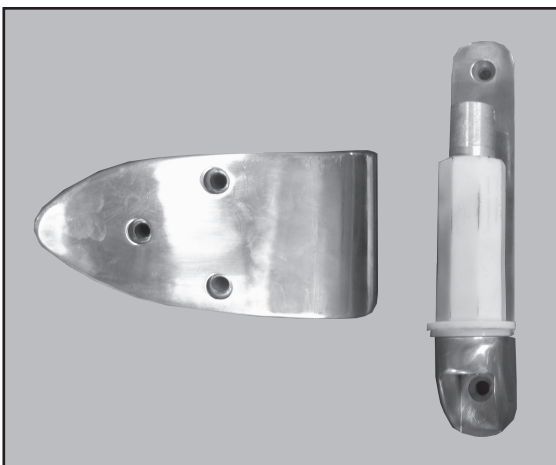
7. Turn knob of inside release clockwise until tight.

1. Remove rubber hat from cylindrical housing.

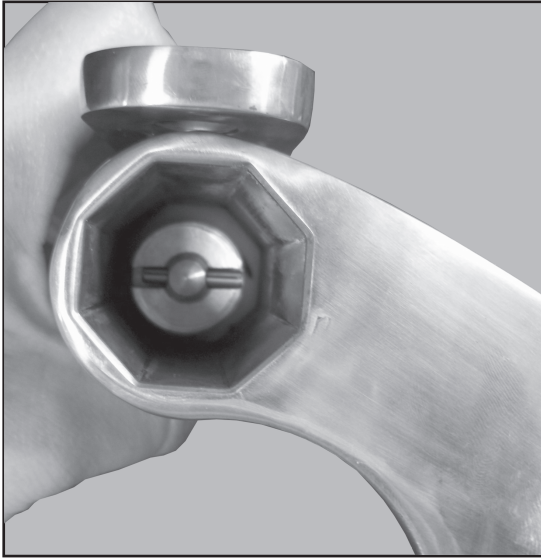


2. Turn hinge upside down with back of hinge facing you. Rest base on protected surface. Using rubber tipped hammer, forcefully strike side of hinge blade, close to base.

3. Repeat as necessary until hinge blade loosens and slides off.

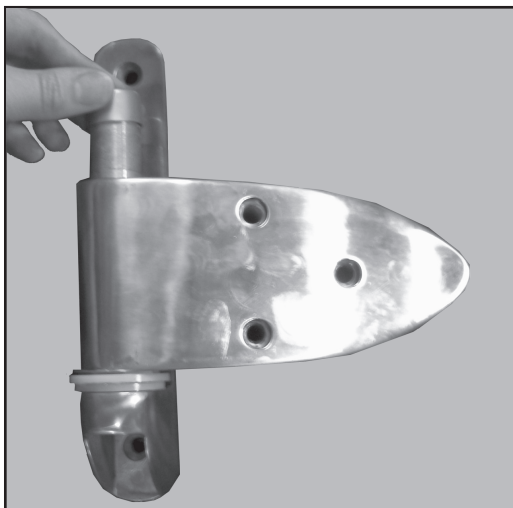
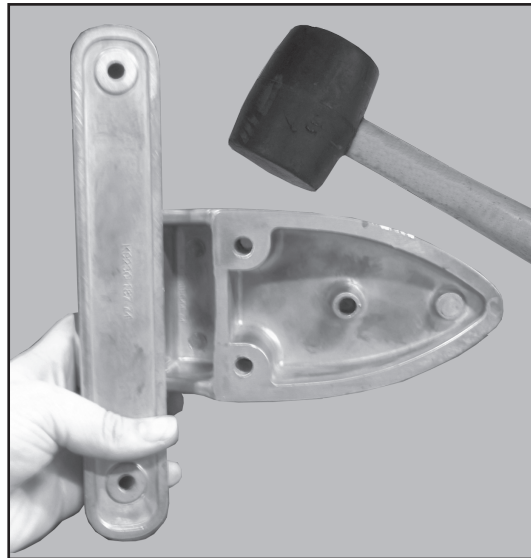


4. Flip blade over for other direction.



5. Match octagon of blade with octagon of nylon.

6. Rest base on protected surface. Using rubber tipped hammer, forcefully strike side of hinge blade, close to base. Repeat as necessary until hinge blade is resting fully on nylon flange.



7. Spray adhesive into rubber hat.  
Recommended: 3M Super Trim  
Adhesive Spray  
PN #051135-08090

8. Attach rubber hat with adhesive  
on to cylindrical housing.